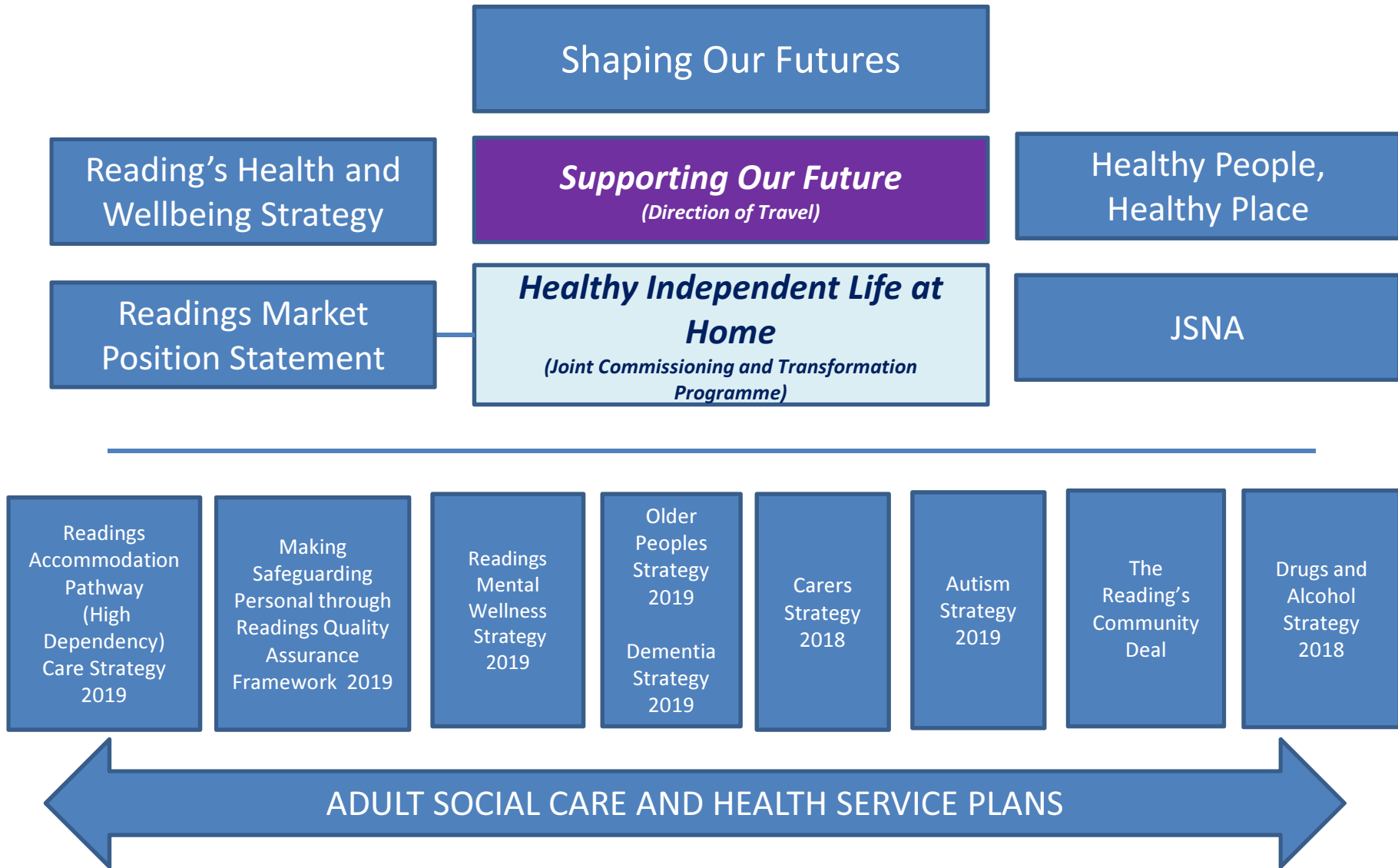


Appendix 2 - Governance



Statement – “Adult Social Care and Health through Supporting Our Future will focus on preventing the need for care, so to maintain People to live “ Healthy, Independent Life’s, at Home”

We value - the right support, at the right time, in the right place

Best People

We will have a difference conversation with people, focused on;
1 – How can we help you, help yourself
2 – Help when you need it
3 – Help you live you life, well longer

Best Place

We will Help You to remain at home in your community
Help you to know what support is in your community
Help you access the right information at the right time

Best Partners

We will Make best use of our joint workforce resources across health and social care
Work with partners who understand your needs
See joint opportunities with health partners – to better deliver services together

Best Pound

We will Ensure services are affordable, offering good value and good quality
Ensure you have choice of care and support
Offer you a Direct Payment to better manage your money

Best Performance

We will transform services so that;
Less people needing health and social care
Less people entering care homes
More people living in the community
More people being supported at work
More people with personal budgets/ health budgets and in taking a Direct Payment
A sustainable market place of preventative care and support providers

Supporting Our Future